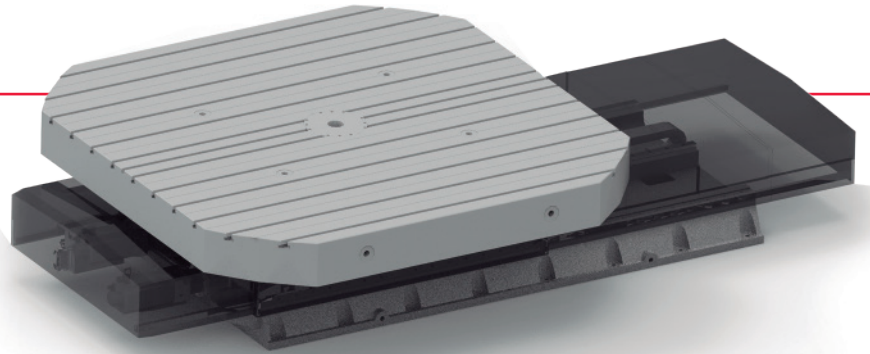
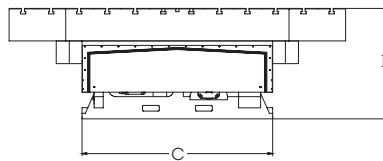
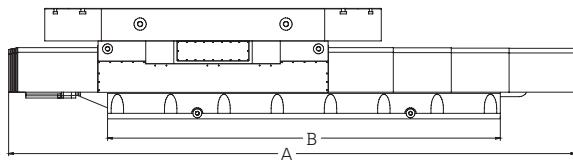


# Linear OPTION



- Linear option available for the following models:
  - PH
  - PHT
  - MDH
  - PT
- Maintenance-free linear sliders (5 years/20000km).
- Linear drive with ball screw or rack and sprocket chain depending on the length of the run.
- Working position: Horizontal.
- Configurable according to customer's needs.

**Measurements:**



\*Dimension "A and B" corresponding to the 1500mm run.

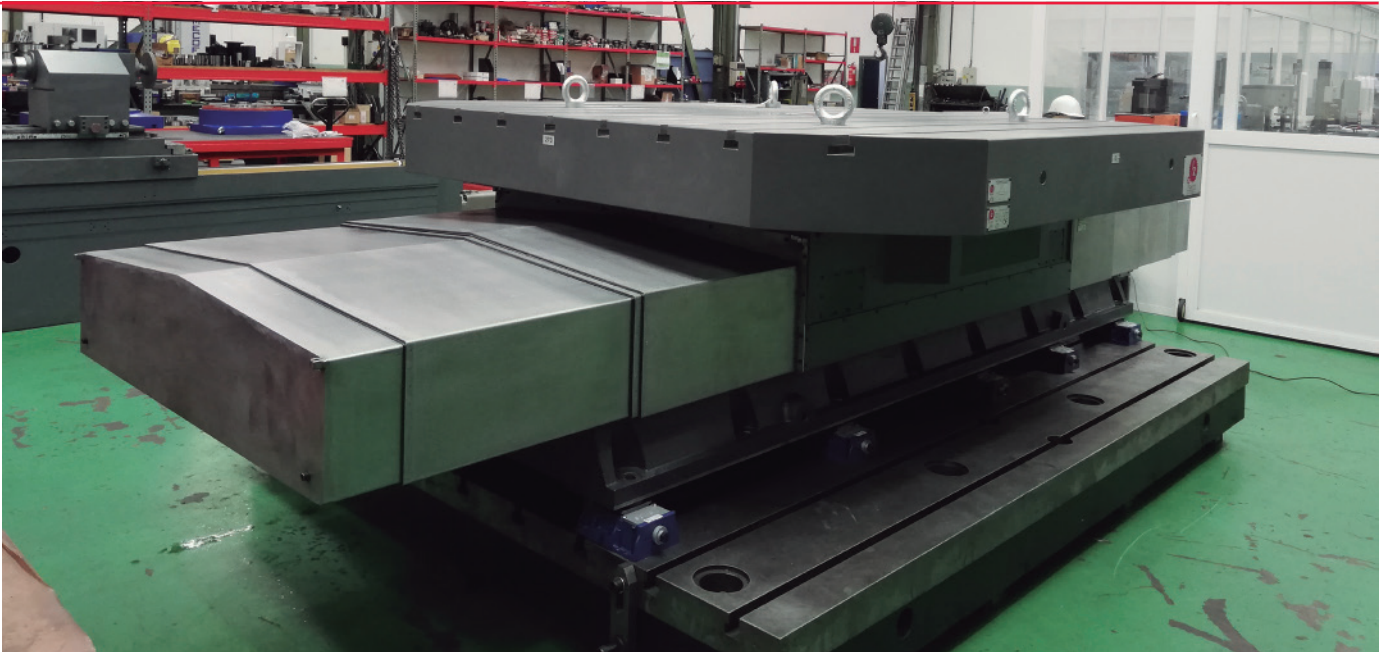
<b>LINEAL</b>	<b>800</b>	<b>1000</b>	<b>1200</b>	<b>1500</b>	<b>1800</b>	<b>2000</b>	<b>2500</b>
<b>A</b>	3350	3975	4275	4450	4675	4875	5050
<b>B</b>	2400	3000	3150	3325	3500	3700	4000
<b>C</b>	800	1000	1000	1200	1500	1800	2200
<b>D</b>	600	675	790	810	850	900	985

**Characteristics:**

	<b>800</b>	<b>1000</b>	<b>1200</b>
Load capacity [horizontal] [T]	6	10	20
Linear movement [mm]	1000 - 3000	1000 - 3000	1000 - 3000
Linear speed [m/min]	15	15	15
Thrust force [N]	11500	16000	23500
Number of linear guides	2	2	2

[!] General data subject to change according to configuration.

# ZEATZ



## 1500

35  
1000 - 3000  
12  
42000  
2

## 1800

40  
1000 - 3000  
12  
42000  
2

## 2000

50  
1000 - 3000  
12  
53000  
3

## 2500

60  
1000 - 3000  
12  
53000  
3