



Sheet Metal Solutions

LANTEK COMPANY PROFILE

lantek

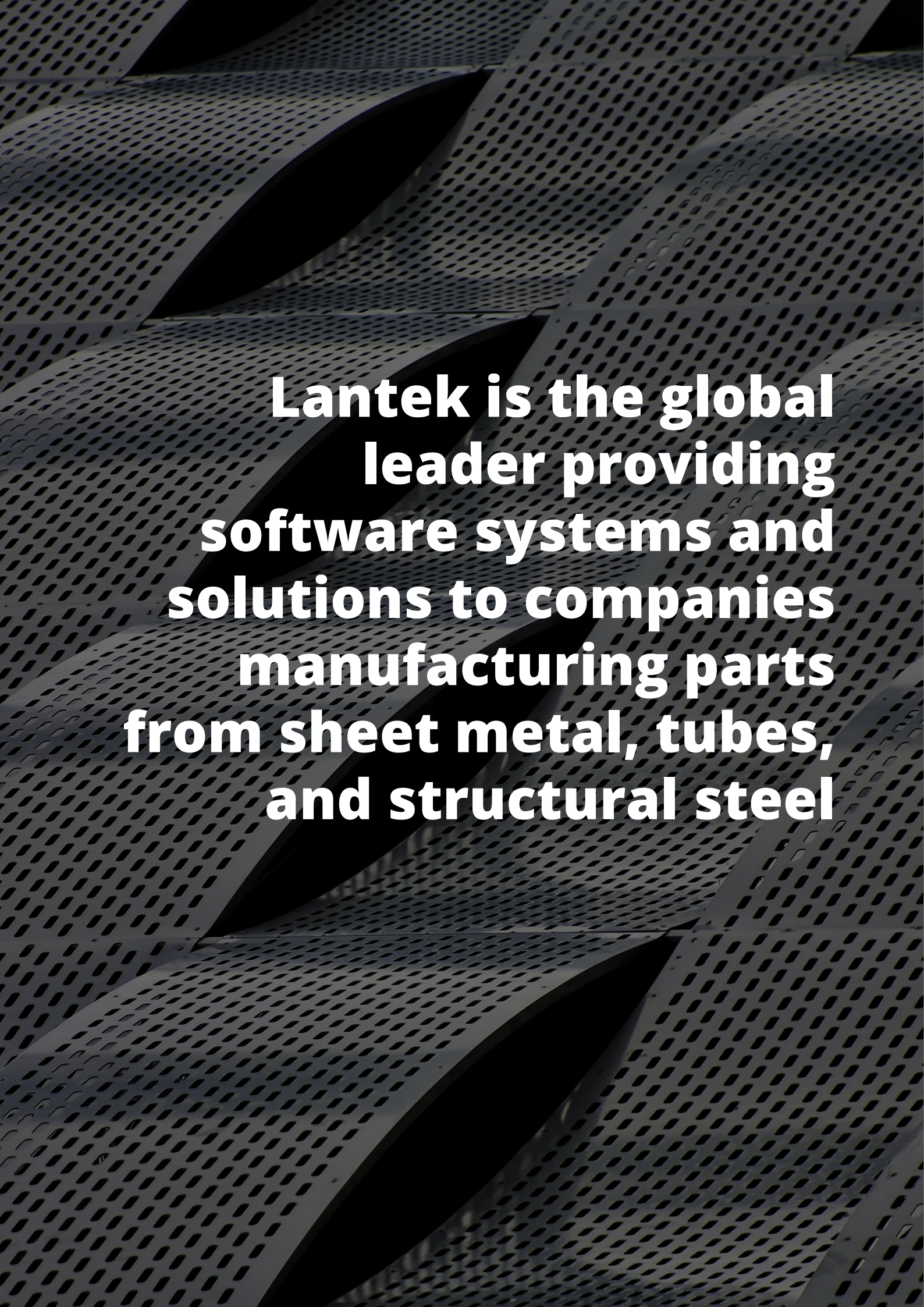
www.lantek.com



Lantek Sheet Metal Solutions
Ferdinand Zeppelin, 2
Parque Tecnológico de Álava
01510 Miñano - Álava

Tel: +34 945 77 17 00
www.lantek.com
info@lantek.com

04	Lantek at a Glance
06	Global Leader
08	Offices & Resellers
10	Team
12	Sectors
14	Financial Health
16	Experience
21	Software Solutions



Lantek is the global leader providing software systems and solutions to companies manufacturing parts from sheet metal, tubes, and structural steel

Lantek is an Information Technology company specialized in the development of software solutions whose main goal is to provide the customer with integrated products and services suited to their needs.

Lantek, founded in 1986 has their global headquarters located in Alava's Technological Park just north of Vitoria-Gasteiz, Basque Country (Spain). With continued expansion across the world, it is now considered the world leader in CAD/CAM software for oxyfuel, plasma, laser, waterjet and punching machines. It is also in the forefront of developing on-demand Management Software solutions (MES/ERP) for metal fabricators.

Global Offices and Distributors

Lantek has offices located in Argentina, Australia, Chile, China, France, Germany, Italy, Korea, Mexico, Poland, Turkey, Spain, United Kingdom, USA and UAE.

Lantek also has distributors across the world including Belgium, Brazil, Canada, Estonia, Finland, Greece, India, Netherlands, Norway, Peru, UAE, Venezuela and more.

Global Leader

6,2

MILLION TONS CUT

Lantek optimizes material yield and quality of results to the maximum.

1.200+

MACHINE MODELS

Lantek gets the most out of any machine model with any technology.

18

LANGUAGES

Available for all our software systems to support our customers and partners.

Lantek is world leader in revenue, customers, offices, sales & technical network, innovation and technological competence among software companies serving the metal fabrication industry.

100+

COUNTRIES

280+

EMPLOYEES

30.000+

CUSTOMERS

Offices & Resellers



Offices

AMERICA

USA	1997	
MEXICO	2007	2
ARGENTINA	2008	
CHILE	2013	

EMEA

SPAIN	1986	2
FRANCE	1991	2
GERMANY	1996	
ITALY	1999	
U.K.	2000	
POLAND	2006	
TURKEY	2007	
UAE	2016	

ASIA & OCEANIA

KOREA	2001	2
CHINA	2006	3
AUSTRALIA	2022	1

Resellers

AMERICA

ARGENTINA
BRAZIL
CANADA
COLOMBIA
VENEZUELA
PERU

EMEA

BELGIUM
CROATIA
CZECH REP.
FINLAND
GREECE
HUNGARY
LITHUANIA

NETHERLANDS
NORWAY
SERBIA
SLOVENIA
SOUTH AFRICA
ESTONIA
ROMANIA

ASIA & OCEANIA

INDIA
THAILAND
VIETNAM
TAIWAN



All this
gives us a
strong and
experienced
team

300+
PEOPLE AT YOUR SIDE

Our team is a mix of dynamism and enthusiasm for delivering improvements every day.

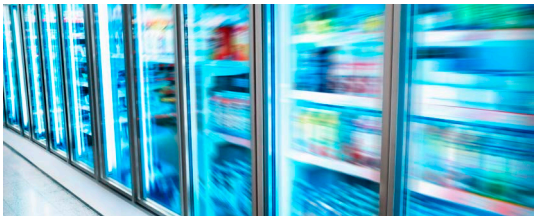
All products are entirely engineered at our R&D Centre in Miñano.

- 90% of our people are STEM, many of whom have studied or worked abroad.
- Multigenerational team with more than four generations interacting at work.
- International team with more than 25 different nationalities.

Sectors

Lantek offers advanced software solutions for metal manufacturing regardless of the sector your company belongs to:

- Elevators & moving walkways
- Commercial Spaces
- Refrigeration
- Buses & Trucks
- Agricultural Machinery
- Excavators
- Structural Steel
- Shipyards
- Air conditioning ventilation
- Energy, solar, wind



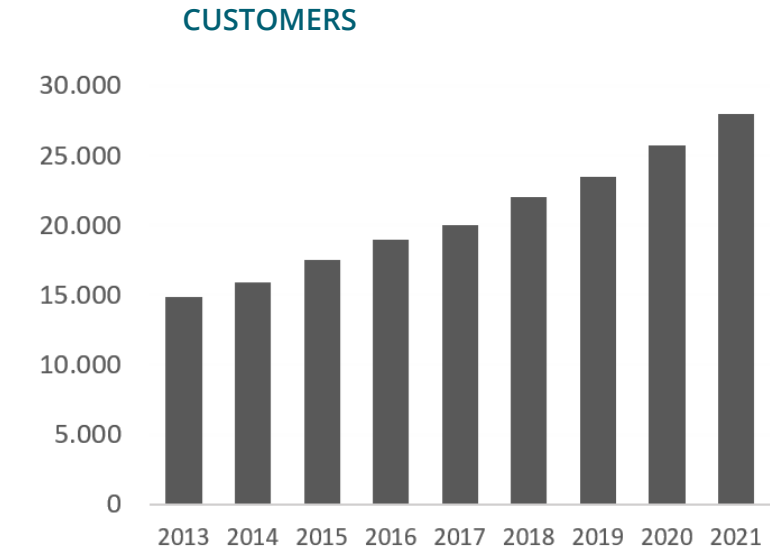
Financial Health

Our internationalization strategy has enabled sustainable growth over the years allowing us to recover from global crisis stronger than ever.

Single shareholder in strong financial standing.

We are leaders in Brazil, China, France, Italy, Korea, Portugal and Spain and the most important company worldwide in this sector in terms of market share.

Lantek invests around 20% of its revenues on R&D for improvement of its products and new technology development.



FINANCIAL HEALTH

Experience

35+
YEARS IN THE
INDUSTRY

96.000 +
active users

850 +
MES/MRP/ERP installations worldwide

100 +
OEM agreements

18
Languages Software & Support

21
Offices

Sheet metal software solutions

We offer the best possible consultation, the broadest range of products, and the best team of professionals prepared to face any scenario with machine tools in the sheet metal and steel structure industries.

Lantek's extensive experience in a wide variety of markets has helped achieve a deep understanding of the needs in the industry and state-of-the-art technology. This experience has helped foster fruitful relationships with both customers and machine tool builders.

Today, Lantek has a strong R&D centre and extensive commercial and technical deployment around the world.

Trust Lantek and achieve a major breakthrough in your company competitiveness:

- PRODUCTIVITY**
 - Process optimization
 - Shorter cycles
 - Iteration improvement
 - Resource coordination and orchestration
- TRACEABILITY & INTEGRATION**
 - Traceability in every step of the production process
 - Integration of each software module
 - Clean and manageable data
- EFFICIENCY**
 - Better asset exploitation
 - Less consumption of energy, raw materials and time
 - Less financing needs
 - Better results in any technology
 - Optimal adaptation to every machine
- BUSINESS INTELLIGENCE**
 - Real time data available from any location
 - Intelligent combination and display of information
 - Analysis, indicators, reports

Software solutions

- CAD/CAM 2D
- CAD/CAM 3D
- MES
- Quoting & ERP
- Analytics
- Integrations

The path to Digital Transformation

This is the Lantek path for the Digital Transformation of your company. A path to optimization of costs and processes through smart automation. How far do you want to go?

MACHINE

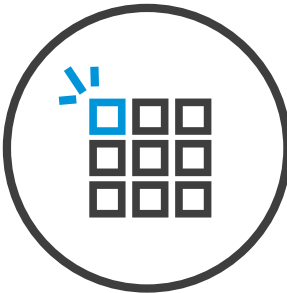
Nesting & Machine control

FACTORY

Quoting & Manufacturing

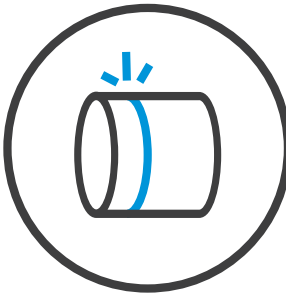
SMART FACTORY

Analytics & Integrations



CAD/CAM 2D

- Lantek Expert Cut
- Lantek Expert Punch
- Lantek Expert Quattro
- Lantek Expert Duct
- Lantek Bend



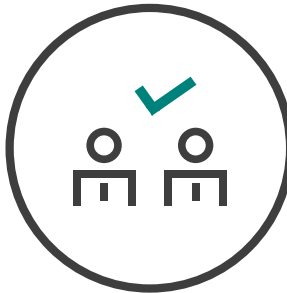
CAD/CAM 3D

- Lantek Flex3d 5x
- Lantek Flex3d Tubes
- Lantek Flex3d Steelwork
- Lantek Flex3d CAD Addins



MES

- Lantek MES Manager
- Lantek MES WOS
- Lantek MES Capture
- Lantek MES Inventory



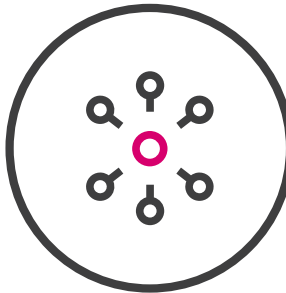
QUOTING

- Lantek Integra Quotes
- Lantek Integra Sales
- Lantek Integra Purchases
- Lantek Integra Outsourcing
- Lantek Integra Production
- Lantek iQuoting
- Lantek MetalShop



ANALYTICS

- Lantek Manufacturing Analytics
- Lantek Customer Analytics
- Lantek Control Panel



INTEGRATIONS

- Lantek Custom Software
- Lantek Systems Integrations



The world's
most
advanced
CAD/CAM
nesting
software

Lantek Expert

Lantek Expert is the world’s most advanced CAD/CAM nesting software system, designed for automating the CNC programming of sheet metal machines.

Lantek Expert provides the advanced nesting algorithms and mechanization strategies (Thinkingmetal Technology) for any cutting (laser, plasma, oxy-fuel, water jet technologies) and punching machines.

Close partnerships with Machine Tool Builders allows Lantek Expert to achieve outstanding performance while optimizing the results of machines from manufacturers like Amada, Esab, Ficep, Flow, HK Laser & Systems, Koike, Mazak, Messer, Prima Power, Salvagnini, Trumpf, and many others.

Lantek ensures excellent results, both in nesting and machining, for any cutting or punching machine today and in the future.

Lantek Expert products

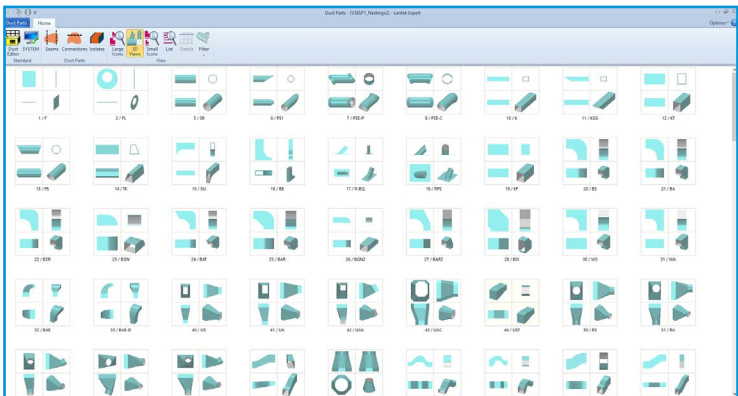
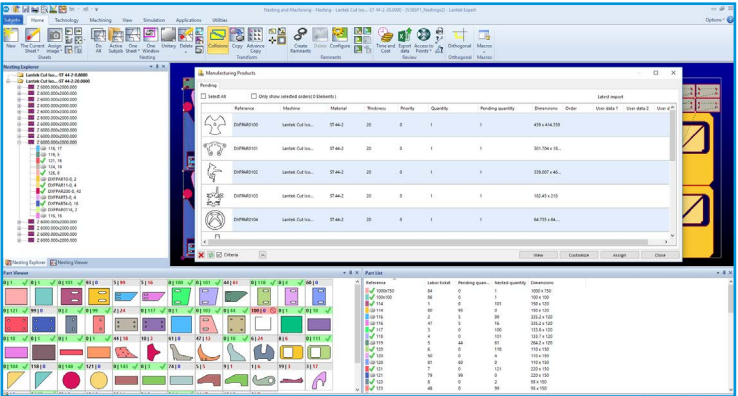
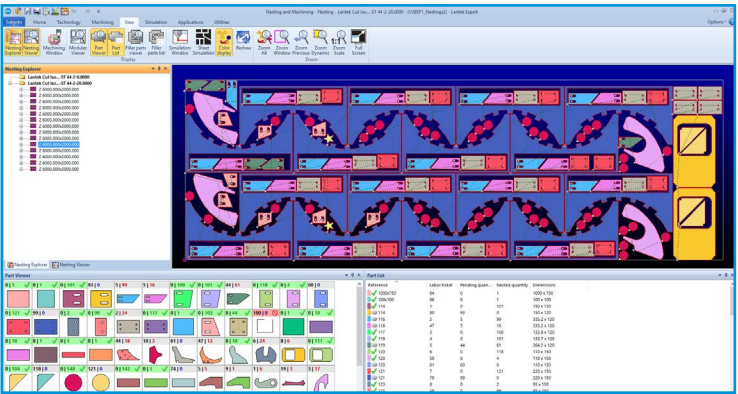
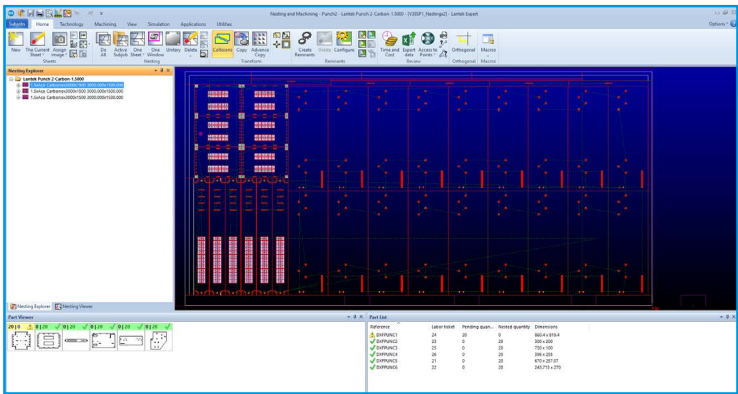
CUT
CAD/CAM nesting software system specially designed for automating the CNC programming of sheet metal cutting machines with oxy-fuel, plasma, laser, and water jet technologies.

PUNCH
CAD/CAM nesting software specially designed for automating the CNC programming of sheet metal punching machines.

QUATTRO
Software system specially designed for shear machines and optimized for nesting rectangular parts.

DUCT
Software system for the calculation of heating, cooling and ventilation ducts.

BEND
Software system for the bending process from 3D geometries.



LANTEK EXPERT



The most
adaptable
3D CAD/CAM
software in the
sheet metal
industry

Lantek Flex3d

Lantek Flex3d is the most flexible 3D CAD/CAM software, totally engineered by Lantek and conceived for automating the CNC programming of 3D machining of tubes, pipes, beams, profiles, and sheet metal.

Lantek Flex3d provides the most advanced nesting algorithms and machining strategies to perform at optimum levels with machines of any technology: laser, plasma, saw, oxy-fuel or water jet, even when combined with complementary tools like drilling, marking, milling, tapping and others.

Lantek Flex3d achieves outstanding performance with our Machine Tool Builder Partners, based on our close collaboration with them, but also optimizes the results of machines from manufacturers like Amada, Boda, Bystronic, Daito, Dardi, Farley, Ficep, Geka, HanKwang, Hans Laser, Kotec, Mazak, Microstep, NTC, Peddinghaus, Prima Power, ProArc, Stako, Trumpf, Vanad, Voortman, and many others.

Lantek ensures excellent results for any machine today and in the future.

Lantek Flex3d products

STEELWORK

CAD/CAM software system for designing, nesting and cutting parts from standard beams & profiles.

TUBES

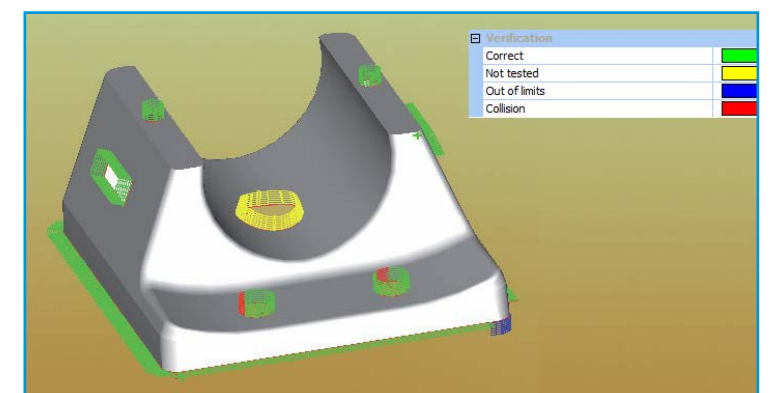
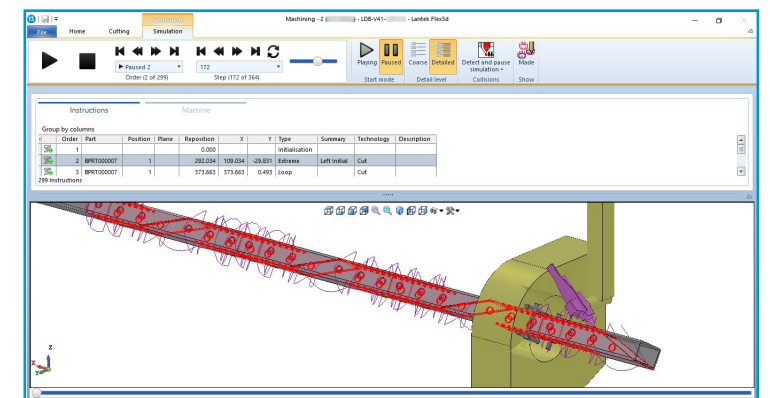
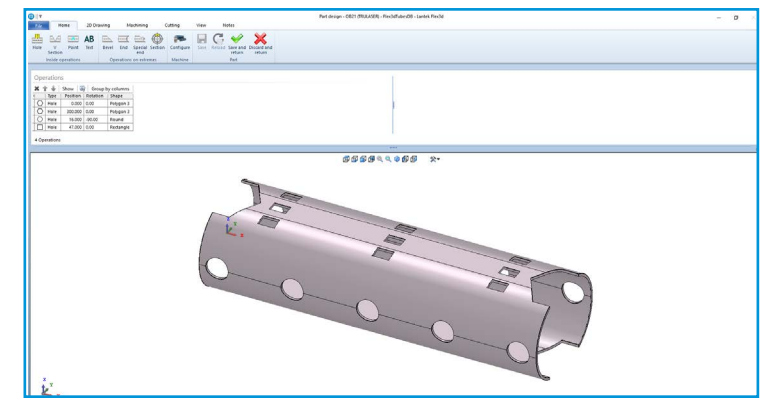
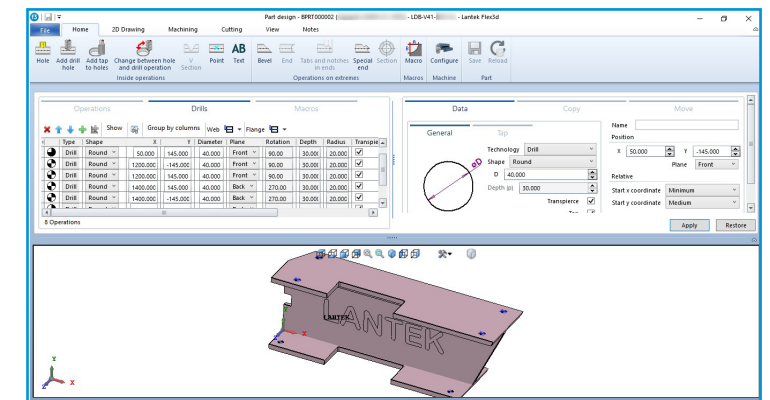
CAD/CAM software system for designing, nesting and cutting parts from tubes and pipes.

5X

CAD/CAM software system for automatic programming of five-axis machine tools for laser and water-jet cutting machines.

CAD ADDINS

Software application which allows any CAD design made for sheet metal parts to be automatically unfolded and loaded into Lantek Expert. It seamlessly integrates with SOLIDWORKS®, Solid Edge®, Autodesk Inventor® and other CAD modelling systems.





Lantek MES

Lantek MES is the family of Lantek products designed for companies who wish to acquire a complete and competitive solution to manage and optimize their manufacturing processes and have real time control of all the different activities taking place in the workshop.

Lantek MES is fully integrated with 2D and 3D CAD/CAM modules. This ensures complete traceability and process optimization.

Lantek MES Products

MES MANAGER

Lantek MES Manager is the sheet metal MES software (Manufacturing Execution System) that directs the execution of all manufacturing processes in the workshop, from launching work orders to production plant to finishing the product.

WOS

Lantek MES Wos is a software system that provides all the necessary tools required to collect data involved in the production process of sheet metal companies from the machine operator workstation.

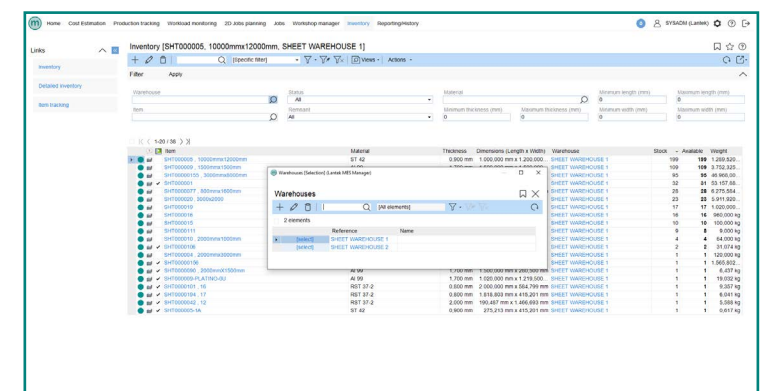
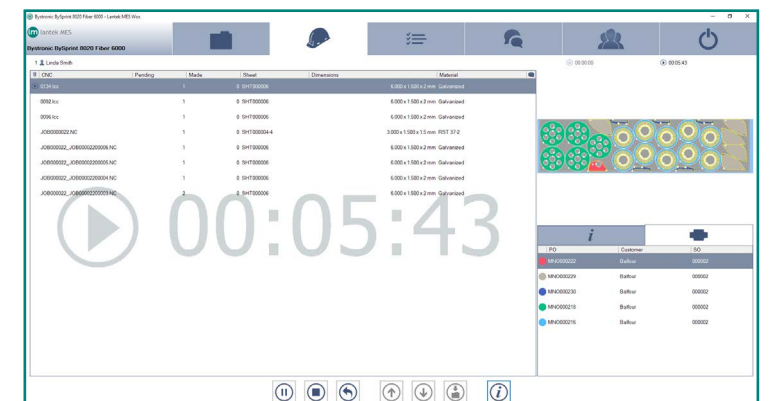
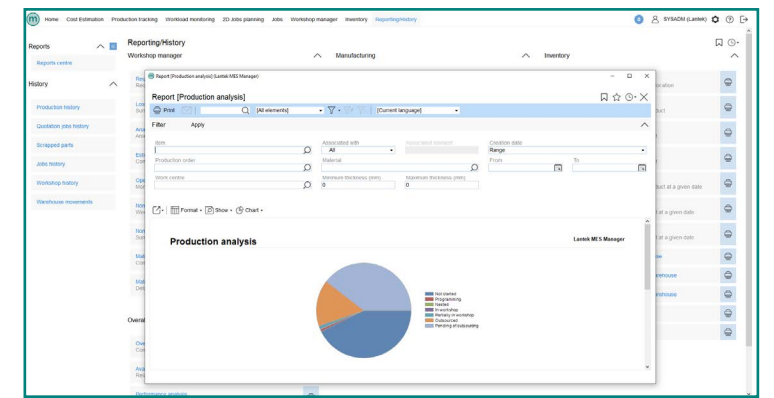
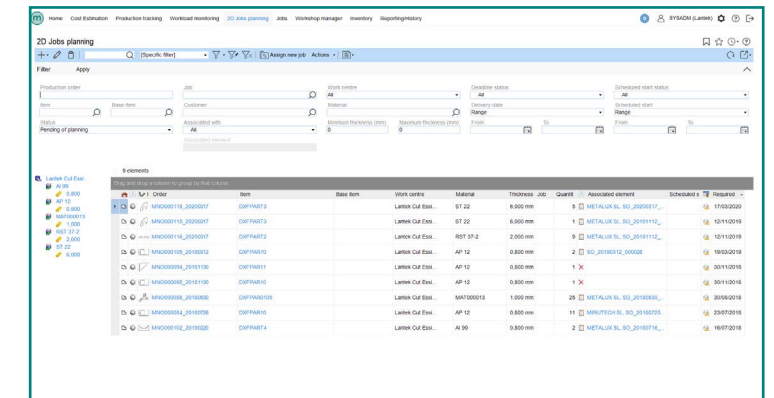
CAPTURE

Lantek Workshop Capture is a software system that provides data input capabilities from the shop floor.

INVENTORY

Lantek MES Inventory is a management solution that provides a real time view of the quantity and valuation of stock for each warehouse.

**The sheet metal
MES software
that will boost
the productivity
of your factory**





Lantek Integra

Lantek Integra consists of a set of complete and integrated functional modules that focus on current and future management needs of companies in each of their areas, from the initial process of sales through to after sales service support.

Lantek Integra is a management software platform aimed at industrial companies in the sheet metal sector. It manages all key areas of the metal fabrication process: sales, manufacturing, purchasing and inventory among others.

Lantek Integra Products

QUOTES

The most accurate and flexible sheet metal quoting software on the market, that includes an specific CRM module for customer management.

SALES

All the necessary information is available immediately to all employees involved in the sales process. This creates an opportunity for time to be spent in higher value-added tasks.

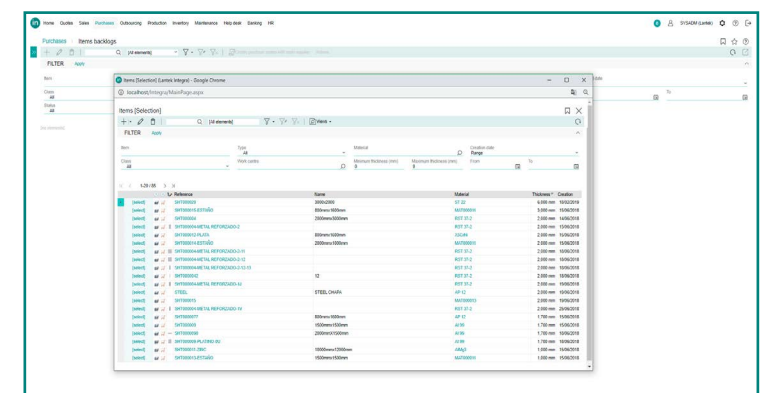
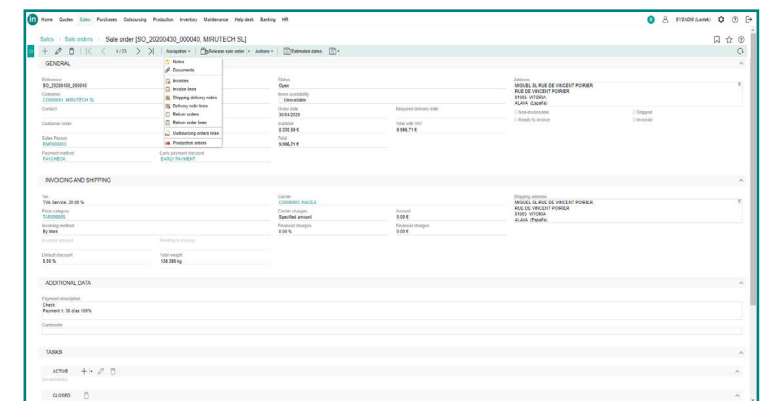
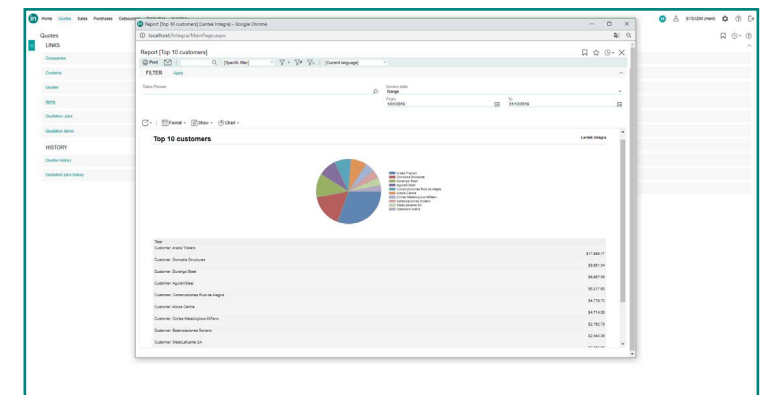
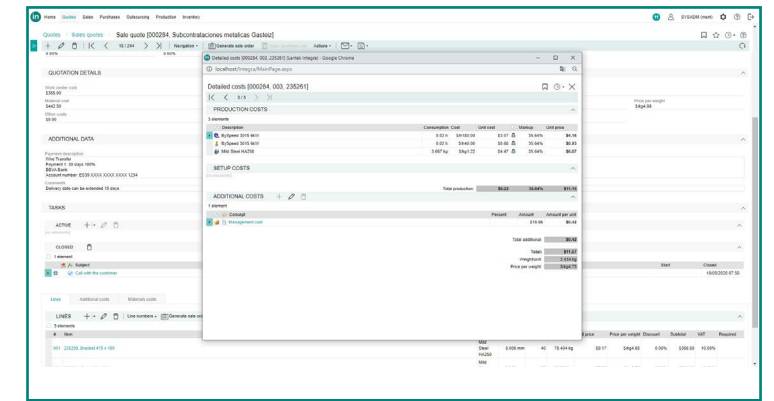
PURCHASES

It is specially designed to cater for those management needs associated with the company's purchasing processes. It supplies the required information in a straightforward and timely manner to the employees involved with purchasing.

OUTSOURCING

This module helps to easily identify the outsourcing requirements of your company and to classify them based on the type of requirement. This module also allows the user to manage the shipments, receipts, and invoices of the company.

Software platform
for advanced
manufacturing
in companies
transforming sheet
metal, tubes
and beams





Lantek Analytics

Lantek Analytics is a family of products that provide access to the information relevant to your company's production process, reliably and in real time. From the performance of each machine to the efficiency of a production line or factory. An exhaustive analysis of the company's customers and sales channels provides preview of manufacturing orders and enables Smart Quoting.

Lantek Analytics Products

MANUFACTURING ANALYTICS

Managing real data from manufacturing process, data analysis and intelligent visualization.

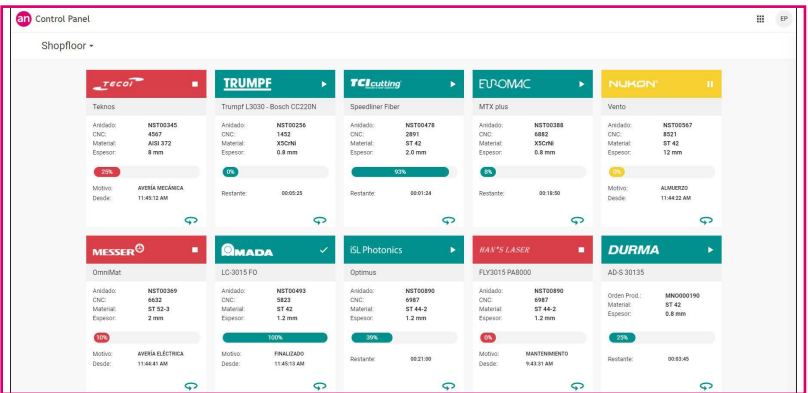
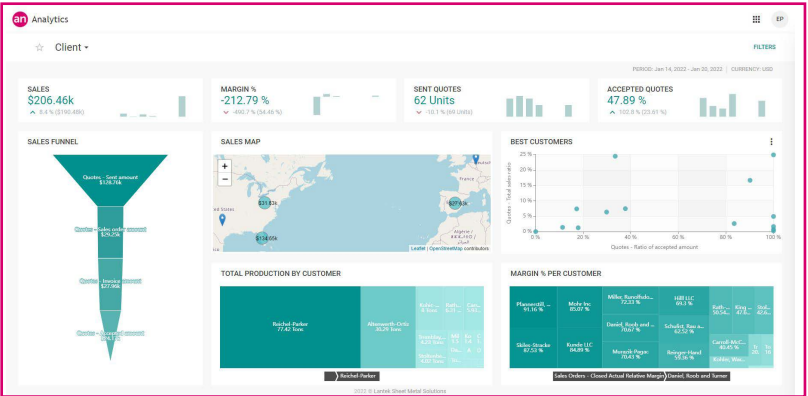
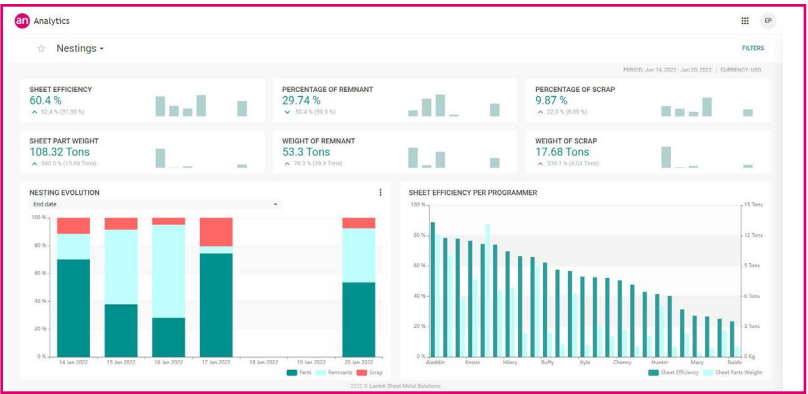
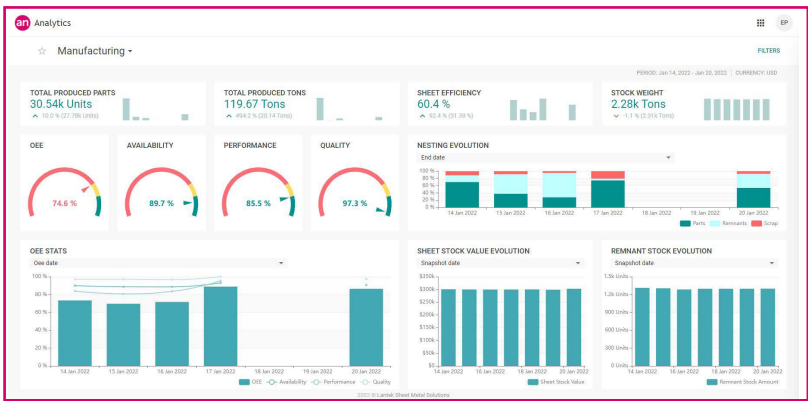
CUSTOMER ANALYTICS

Sales funnel, Best customers map, Sales vs. margins, Quote history, Seasonality, Material consumption... all the Commercial KPI's on any device, anytime.

CONTROL PANEL

Complete factory control at your fingertips. Customize your indicators in a cockpit updated in real-time on your mobile device. Access the real-time status of machines, receive notifications about your production and your customers for decision making. Good decisions cannot be made when not based on real and updated data.

Good decisions can't be made when not based on real and updated data



integrations

REPLICA Integration mechanisms

Under the REPLICA name, Lantek has developed a battery of system integration mechanisms designed to increase the productivity of a company. It enables exhaustive control of the running of a business, speeding up the capacity to respond with correction procedures when faced with unplanned incidents.

Lantek has been implementing technological solutions in different markets and many countries, each with specific needs and different challenges. This experience has allowed it to build a range of specialised integration mechanisms which are fully adapted to the degree of maturity of each company. These will help them to plan their resources, increase the performance of staff members and improve cost savings.

Integration mechanisms

AVANTIA SERVICES

Advanced web services API prepared to interoperate with any of the advanced ERP systems in the industry.

POWERSYNC

Flexible integration with existing management systems (ERP/MRP).

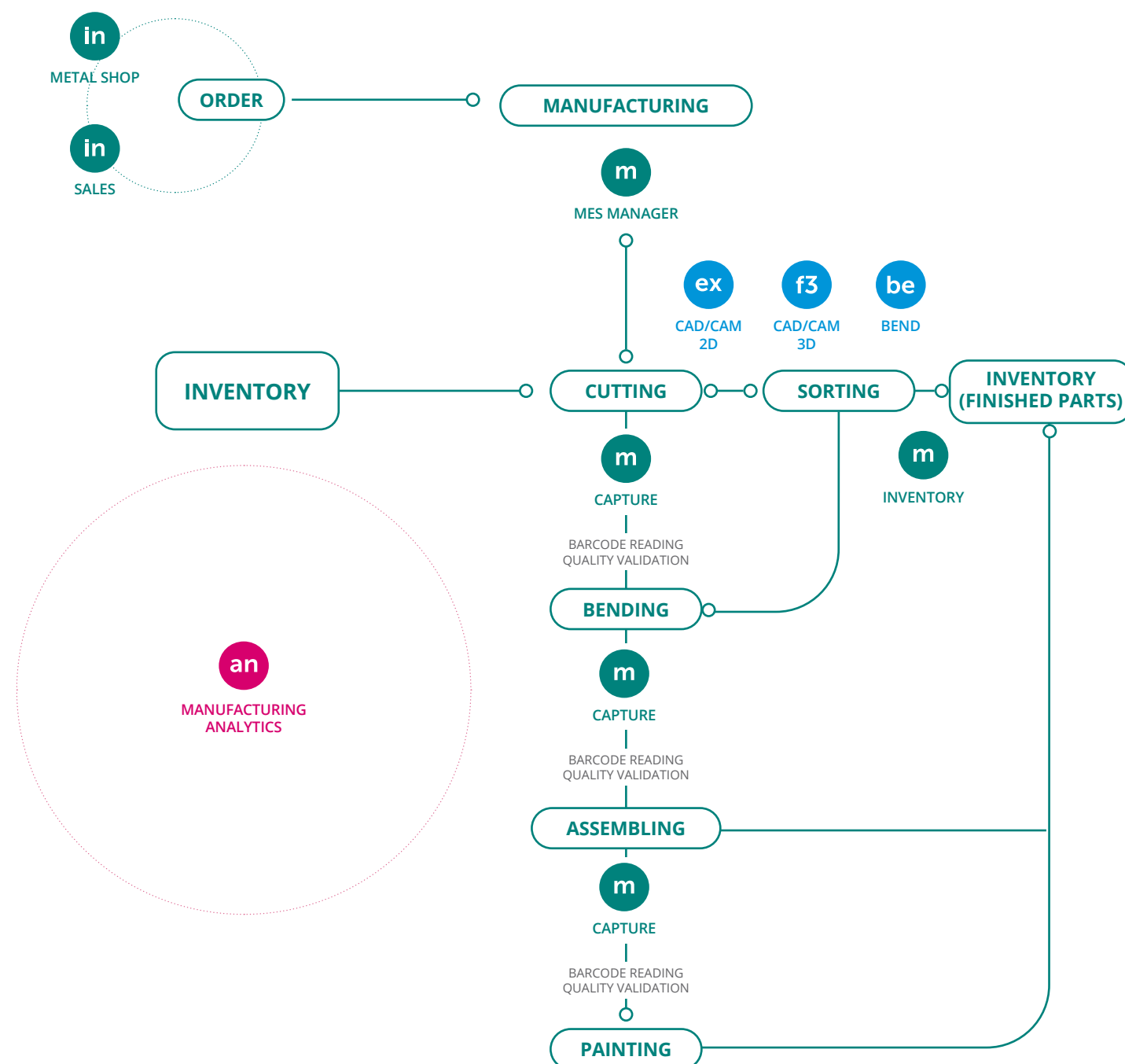
MASTERLINK

Integration mechanism between existing management systems (ERP/MRP) and Lantek CAD/CAM software

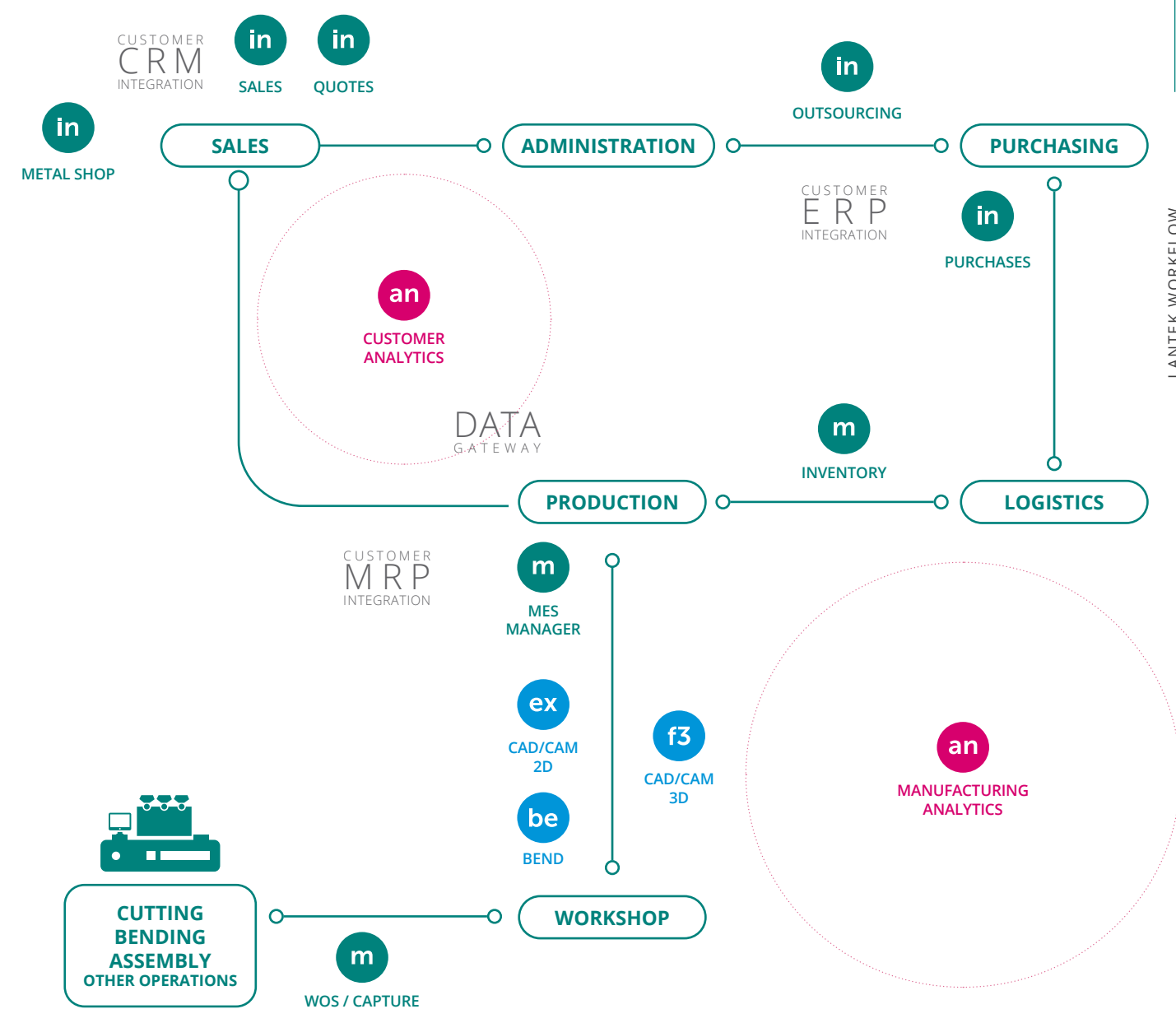
OPENTALK

Opentalk is an integration mechanism which allows any machine to communicate its production status to other connected systems in the network.

Lantek Suite: Workshop process



Lantek Suite: Workflow



**Lantek is a system
of open modules and
universal interconnection**

MAIN OFFICE - SPAIN
Lantek Sheet Metal Solutions, S.L.
Parque Tecnológico de Álava
Ferdinand Zeppelin, 2 (Lantek)
01510 Miñano (Álava)
Tel.: +34 - 945 771 700
Fax: +34 - 945 298 714
info@lantek.es

ARGENTINA
Tel.: +54 - (3564) 435362
soporte.america@lanteksms.com

CHINA
Tel.: +86 - 21 6845 5605 (Shanghai)
sales.china@lanteksms.com

FRANCE
Tel.: +33 - 474 977 948 (Lyon)
info.france@lanteksms.com

GERMANY
Tel.: +49 - (0) 6151 39789 - 0
info@lantek.de

ITALY
Tel.: +39 - 0172 479 208
sales@lantek.it

KOREA
Tel.: + 82 - 51 319 2775 (Busan)
lantek@lantek.co.kr

MEXICO
Tel.: +52 (55) 5386 1665 – 6363 0581
info.mexico@lanteksms.com

POLAND
Tel.: +48 32 200 09 55
wsparcie@lantek.com

TURKEY
Tel.: +90 224 453 4418
info.turkey@lanteksms.com

UAE
Tel.: +971 6 5338833
sales.uae@lanteksms.com

UNITED KINGDOM
Tel.: +44 (0) 1684 342345
sales.uk@lanteksms.com

USA
Tel.: +1 - 877 805 1028
info.usa@lanteksms.com



lantek

www.lantek.com
(EN)