

**APPLICATIONS**

HUBS . FRAMES . OTHER APPLICATIONS

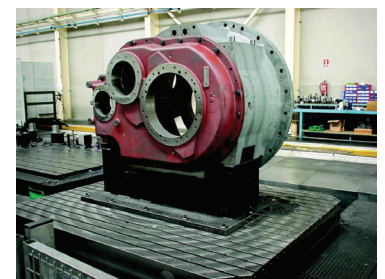
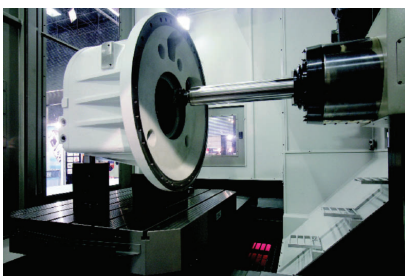
**BED-TYPE MILLING MACHINE VH-PLUS-MG**

The new VH-PLUS-MG bed-type milling machine with rototranslating table permits machining medium-sized parts in one clamping thanks to its rotary tables of different sizes. Moreover, its T-shaped configuration allows it to have cross travels of up to 2500mm, which makes this machine versatile and multi-purpose.



**TECHNICAL CHARACTERISTICS**

<b>Speed (r.p.m.):</b>	3.000 - 4.000
<b>Main Motor Power (Kw.):</b>	46
<b>Travels (mm):</b>	2.000 - 4.000 / 1.500 - 2.500 / 1.500 - 2.500
<b>Rotary table (mm):</b>	1.250 x 1.600 / 1.600 x 2.000 / 2.000 x 2.500
<b>Torque (N/m):</b>	7.000 - 24.000
<b>Rapid Feed (m/min):</b>	20, 10 (W)
<b>Max. load on table (kg/m<sup>2</sup>):</b>	8.000 - 18.000
<b>Taper:</b>	ISO 50



**REFERENCES**

- . TALLERES ALLUS
- . INMAPA
- . AREVA
- . PATTEL
- . LK
- . NEUENHAUSER

