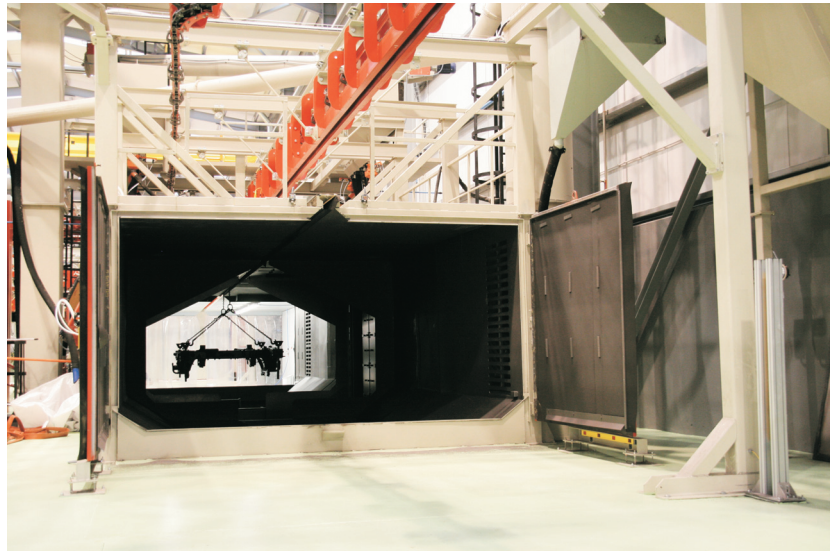


APPLICATIONS

BOGIE

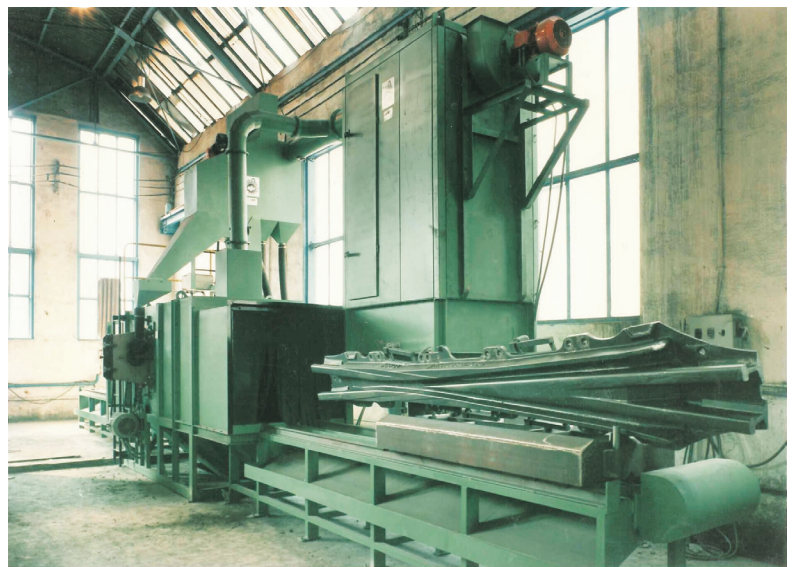
SURFACE FINISHING FOR COMPONENTS OF RAILWAY SECTOR

Customized equipment for the surface treatment of different components of railway sector for vehicles and infrastructures. This is a suspended load automatic shot blasting machine of ours, among our wide range of models.



TECHNICAL CHARACTERISTICS

Special design and high quality materials: blasting cabin of hard-wearing steel, blast wheels from 7.5 to 30 kW. Inner and outer surface finishing.



REFERENCES

- CAF
- RAILTECH (SUFETRA-TRANOSA)
- JEZ SISTEMAS FERROVIARIOS, S.L.
- RENFE
- ADMINIST. INFRAEST. FERROVIARIAS - ADIF

